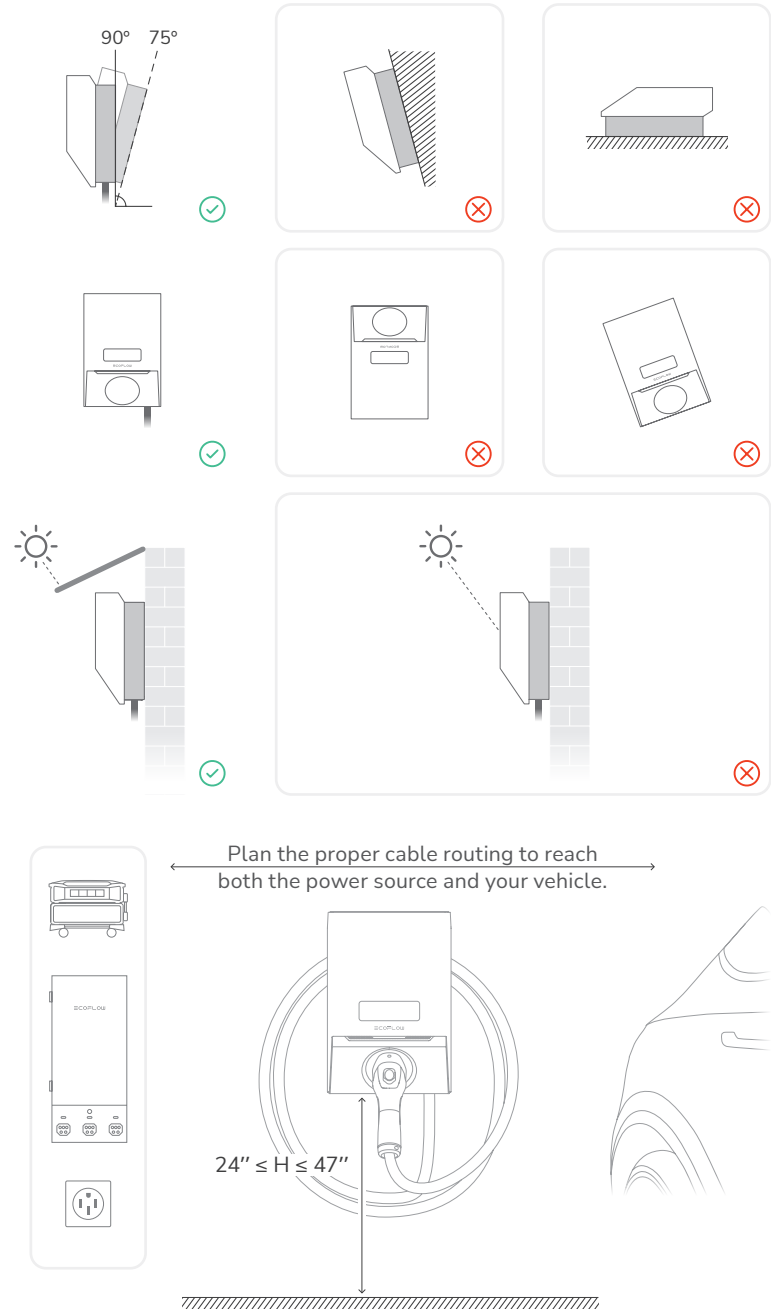
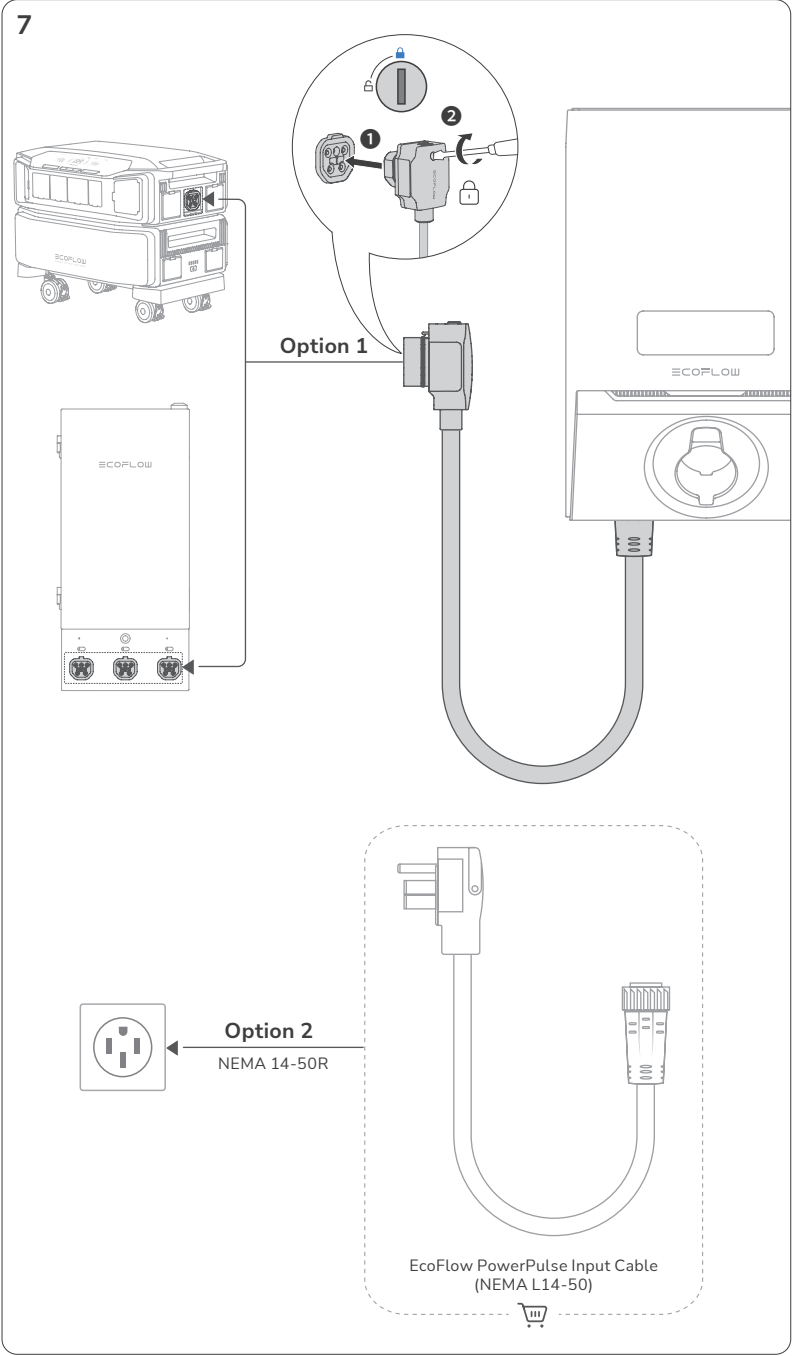
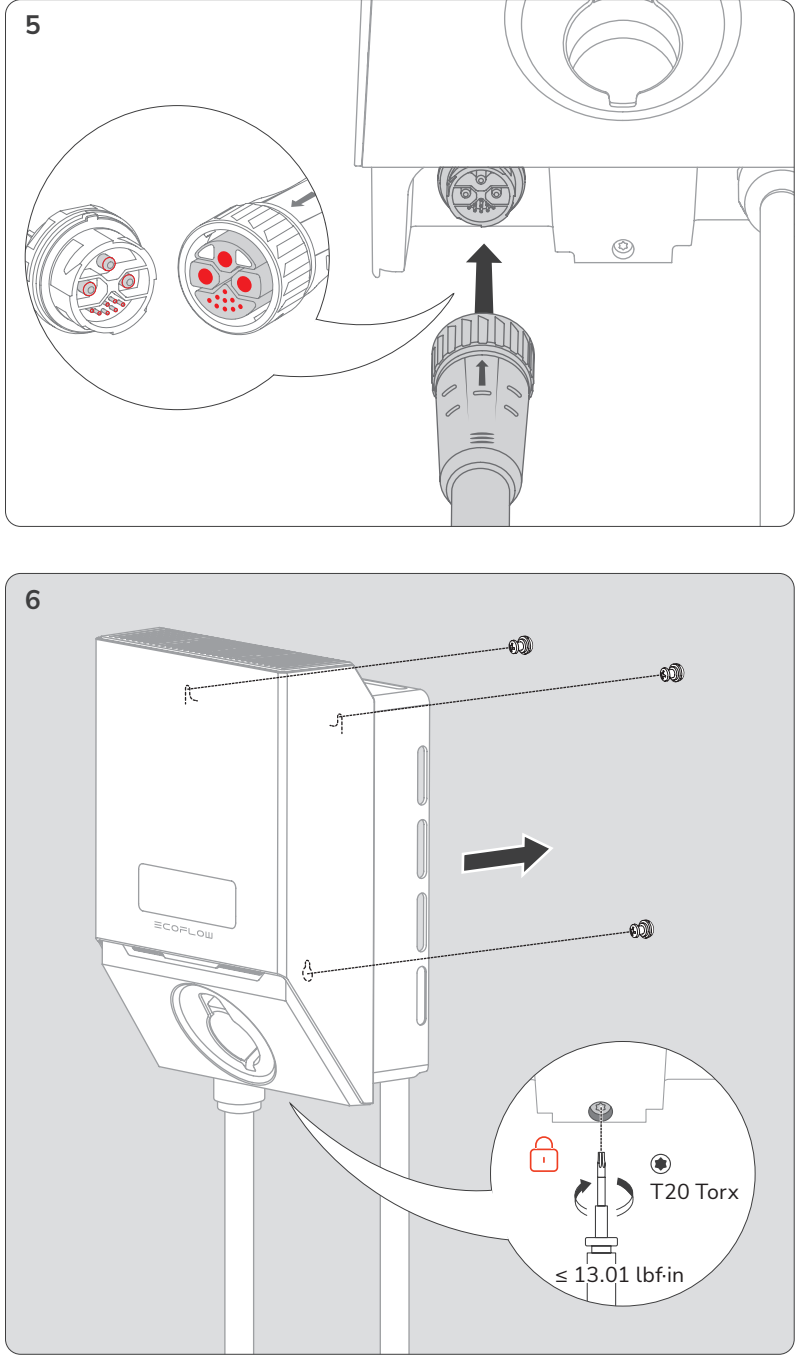
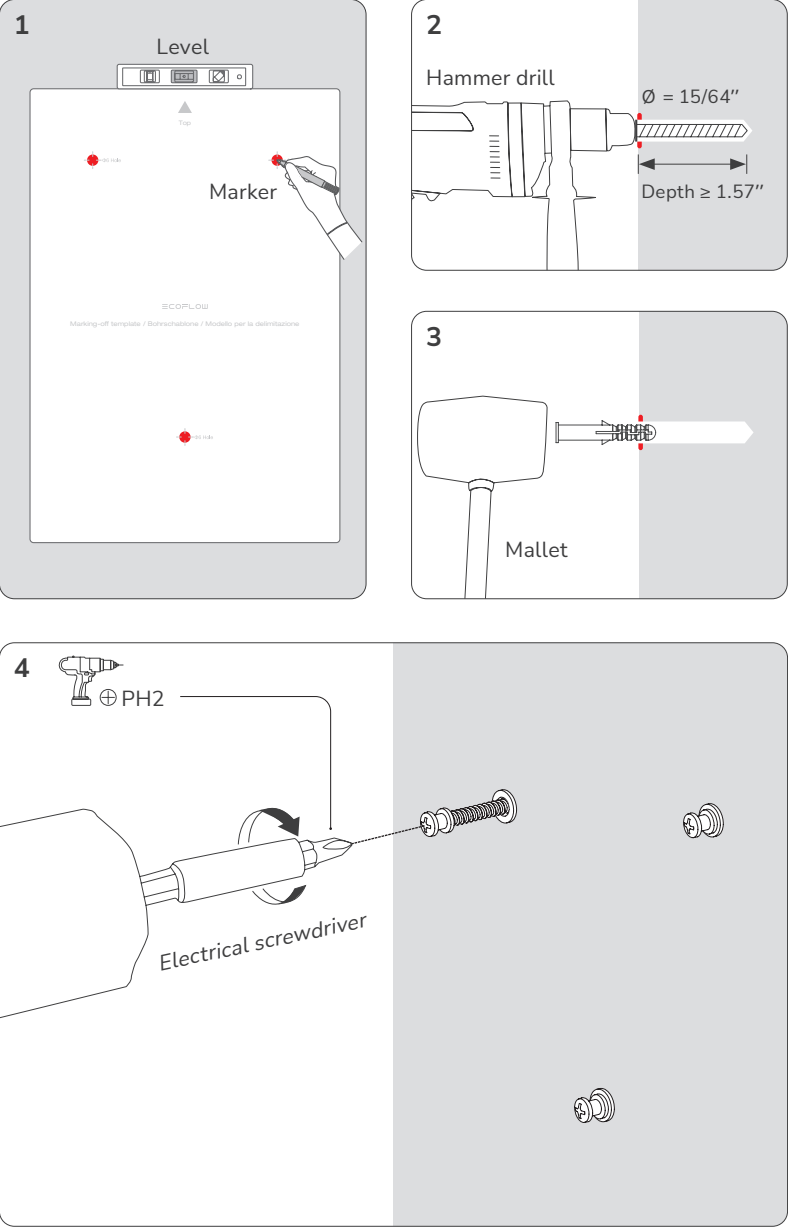


Installation Environment



Installation and Wiring

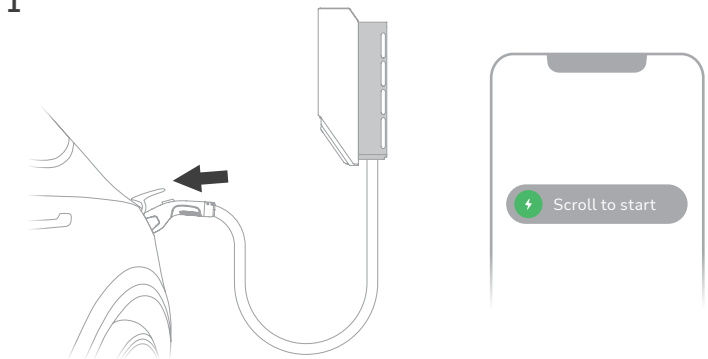
- Prepare a marker, level, hammer drill ($\varnothing = 15/64''$), mallet, electrical screwdriver (PH2), and a screwdriver (T20 torx) before installation.



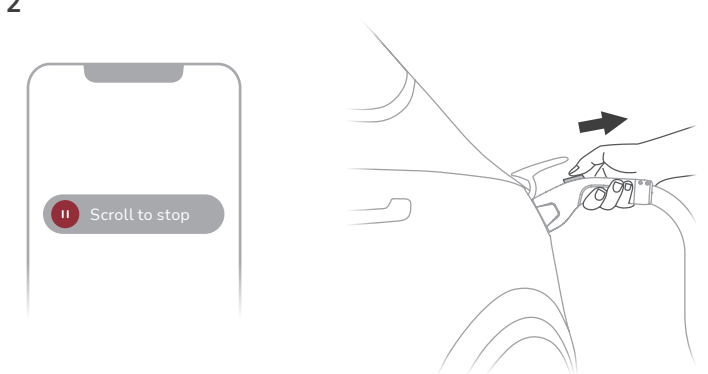
Control via EcoFlow App



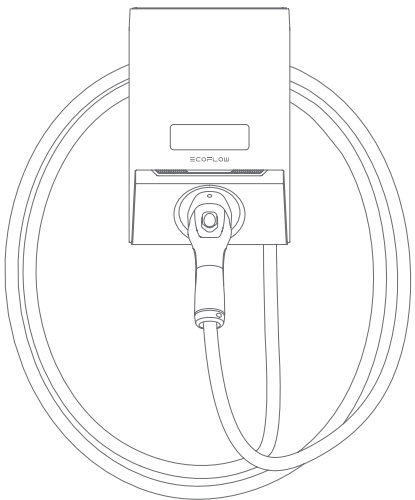
1



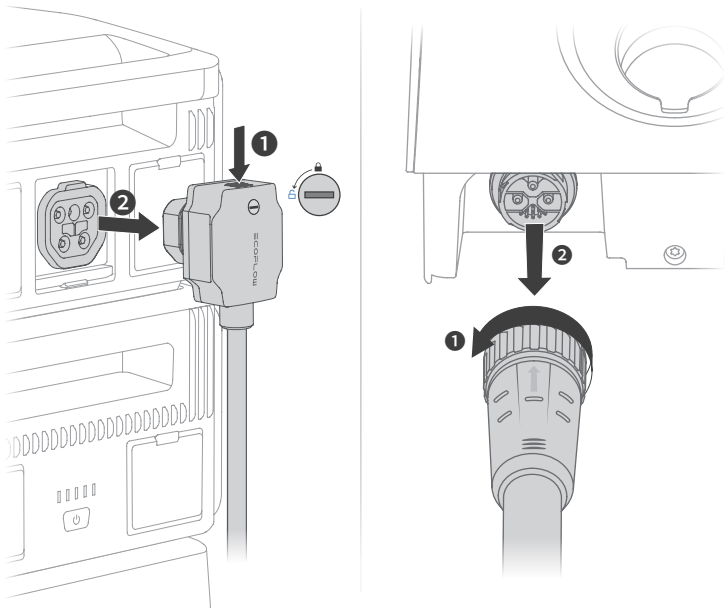
2



Tips and Tricks

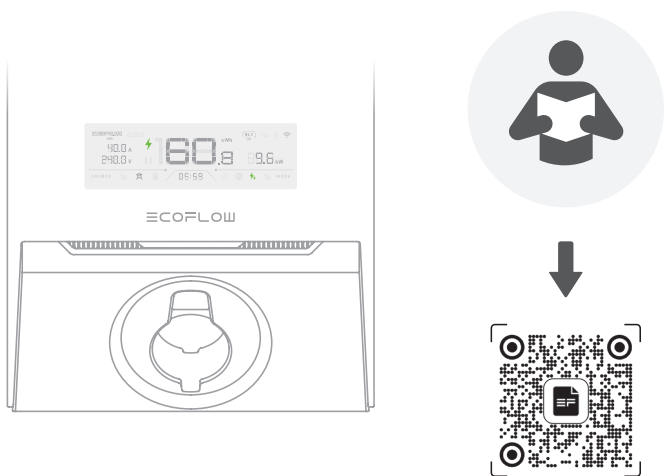


To store the charging cable

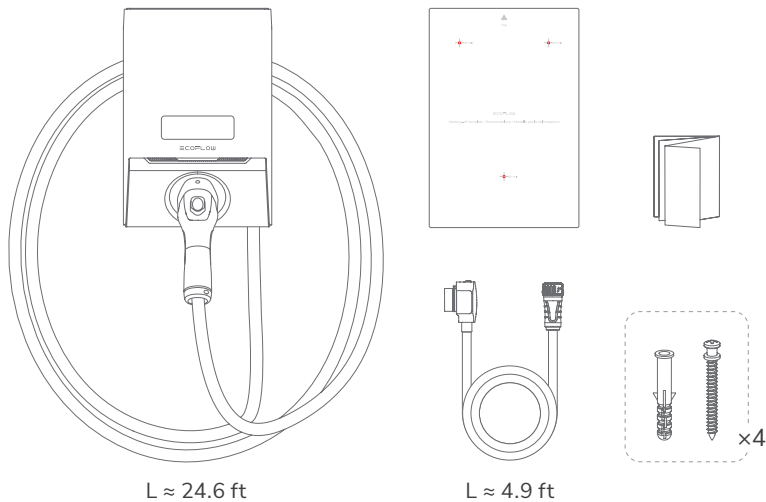


To remove the input cable

Read the Display Screen



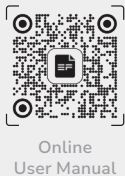
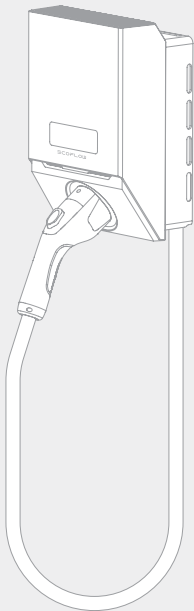
What's in the Box



ECO FLOW

INSTALLATION GUIDE

V1.0



Online
User Manual

EcoFlow PowerPulse
EV Charger (9.6kW)

For more details, check the latest user manual or
related documents.

Q <https://www.ecoflow.com/support/download>

* Images in this document are for demonstration only.